

## FAILURE MODE AND EFFECT ANALYSIS (FMEA)

*Anticipate failure. Prevent it before it happens.*

HRD Corp registered training program ID: 10001340007



Face to Face  
Instructor-Led Training



6th & 7th March 2025



6 & 7  
MAY 2026  
(WED-THU)



9:00 AM  
5:00 PM



Jazz Hotel,  
Penang



**Register Now!**



[www.progresslink.com.my](http://www.progresslink.com.my)



## QUALITY ASSURANCE

### Course Overview

Failure Mode and Effects Analysis (FMEA) is a systematic and proactive methodology used to identify, evaluate, and eliminate potential risks and failures associated with product or process design. By enabling organisations to anticipate issues before they arise, FMEA supports early intervention and preventive action, thereby reducing the likelihood of costly disruptions, safety incidents, and quality deficiencies. This forward-looking approach enhances the overall reliability, safety, and performance of systems and processes, while also contributing to increased customer satisfaction and reduced operational risks.

FMEA is particularly useful when analysing the effects of proposed changes to existing processes or evaluating new processes prior to deployment. Rather than addressing problems after they occur, this method supports continuous improvement by allowing teams to prioritise and address failure modes based on severity, occurrence, and detectability.

This two-day course presents a structured, step-by-step methodology for conducting FMEA, guided by proven best practices in both design and process applications. Participants will gain a thorough understanding of how to apply FMEA as a risk assessment and problem-solving tool, learning to identify failure modes, evaluate their impact, and determine appropriate actions to mitigate or eliminate risks. Emphasis is placed on the application of both Design FMEA (DFMEA) and Process FMEA (PFMEA), including preparation, analysis, failure mapping, and rating techniques.

Throughout the course, participants will develop complete FMEA documentation using robustness tools, process flow charts, and control plans. Industry-specific examples and terminology will be used to ensure practical relevance and to reinforce conceptual understanding. By the end of the course, participants will be equipped with the knowledge and practical skills needed to implement FMEA effectively within their own organisations to drive design improvement, enhance process management, and reduce failure-related costs.



## Learning Outcomes

By the end of this workshop, participants will be able to:

- Understand the principles and purpose of FMEA as a proactive risk management and quality improvement tool.
- Differentiate between Design FMEA (DFMEA) and Process FMEA (PFMEA), including their scope, application, and objectives.
- Apply a structured, step-by-step approach to conducting FMEA, including preparation, failure mode identification, and risk evaluation.
- Assess and prioritise risks using severity, occurrence, and detection ratings to calculate Risk Priority Numbers (RPNs).
- Develop and document complete FMEA worksheets, incorporating robustness tools, process flow diagrams, and control plans.
- Analyse and interpret FMEA results to identify critical areas requiring corrective or preventive actions.
- Use FMEA to support design and process improvements, change management decisions, and problem-solving initiatives.

# FAILURE ANALYSIS

## Course Benefits

FMEA enhances customer satisfaction and reduces the likelihood of failures by proactively identifying potential points of failure before they escalate into major issues. By addressing risks early in the design or production process, organisations can prevent costly recalls, avoid legal liabilities, and ensure more reliable product performance.

## Who Should Attend?

This course is ideal for Product, Process, Test, and Quality Managers, Engineers, Supervisors, Team Leaders, and staff involved in FMEA, APQP, Control Plans (CP), or PPAP. It is particularly relevant for those engaged in product design, process development, or risk management. While no prior FMEA experience is required, a basic understanding of manufacturing or design processes is beneficial.

## Training Methodology

This workshop employs a dynamic, learner-centered approach that blends theory with hands-on practice. Using a mix of interactive lectures, real-world case studies, and collaborative group activities, participants will engage in role-playing scenarios, problem-solving simulations, and peer discussions to reinforce key concepts.

## Training Duration

Full 2 days training (9:00 am-5:00 pm)

## HRD Corp Registered Program ID Nos

10001340007

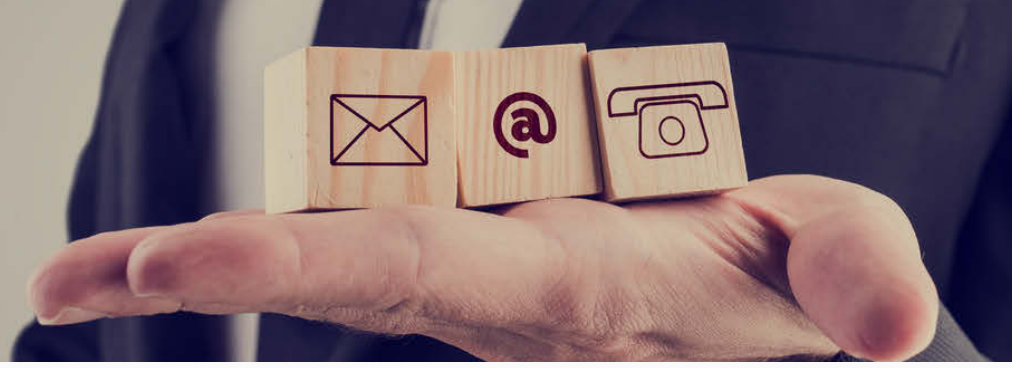
## Public Program Course Fee

Single Registration – RM 1,480.00 nett per participant

Group Registration – RM 1,110.00 nett per participant  
(For 4 participants or more from the same organisation)

*(The fee covers training materials, lunch, coffee/tea, snacks, supplementary notes, a detailed training report with assessment and a Certificate of Completion)*

For more  
information



## In-House Training Enquiry

For more information regarding our In-House/ Public Program courses, please email us your inquiry at [sales@progresslink.com.my](mailto:sales@progresslink.com.my).

or to speak to our Sales Consultant at +604- 297 6881 or 011-1289 6881

For public program schedules, please visit our website: [www.progresslink.com.my/events/](http://www.progresslink.com.my/events/)

*Register*  
**TODAY**  
TRAINING FEES ARE ELIGIBLE FOR  
HRD CORP CLAIMABLE COURSE SCHEME.



**PROGRESS LINK TRAINING & CONSULTANCY SDN BHD (880988-H)**

Address: C-3-1, Vantage Desiran Tanjung, Jalan Tanjung Tokong,  
10470 Tanjung Tokong, Penang, Malaysia.

Tel : +6 04- 297 6881 Fax : +6 04- 297 6882

Email: [sales@progresslink.com.my](mailto:sales@progresslink.com.my)

Website: [www.progresslink.com.my](http://www.progresslink.com.my)

# COURSE MODULE

## DAY ONE - FMEA FUNDAMENTALS AND PROCESS APPLICATION

### 1. Introduction to FMEA

- Definition and purpose of FMEA
- What FMEA is and what it is not
- Benefits of implementing FMEA in design and process management
- Common challenges and misconceptions
- Industrial applications and relevance
- Principles, framework, and objectives of FMEA

### 2. Types and Scope of FMEA

- Overview of Design FMEA (DFMEA) and Process FMEA (PFMEA)
- When and why each type is applied
- Integration of FMEA into product development and process planning
- Roles and responsibilities in FMEA execution

### 3. Process FMEA Methodology

- Understanding process functions and requirements
- Identifying potential failure modes and their effects
- Evaluating severity and consequences of failure
- Linking failure effects to process characteristics

### 4. Root Causes and Risk Evaluation

- Identifying potential causes of failure
- Assessing the occurrence and detection of causes
- Understanding Risk Priority Number (RPN)
- Developing effective corrective and preventive actions
- Relationship between DFMEA and PFMEA

### 5. Conducting an FMEA

- Key steps and workflow for conducting FMEA
- Timing: when to initiate and complete an FMEA
- Team composition and responsibilities
- Types of FMEA and project lifecycle integration
- Time management and resource planning

# COURSE MODULE

## DAY TWO - INTEGRATING FMEA WITH CONTROL PLANS AND DESIGN VALIDATION

### 6. Control Plans and Linkage to FMEA

- Definition and purpose of Control Plans
- Steps in developing an effective Control Plan
- Use of Control Plans in quality and continuous improvement
- Aligning Control Plans with identified risks in FMEA

### 7. Critical Characteristics of Management

- Classification and identification of critical, significant, and general characteristics
- Control strategies for critical features
- Integration into Process Control Plans and product validation

### 8. Common Pitfalls in FMEA Application

- Challenges in identifying failure modes, effects, and causes
- Misinterpretation of severity, occurrence, and detection ratings
- Limitations in control strategy and verification methods
- Best practices to overcome common issues

### 9. Design Review and FMEA Validation

- Stages of design review: preliminary, intermediate, and final
- Using checklists to ensure FMEA completeness and accuracy
- Review loops for continuous improvement and design verification

### 10. Closing and Review

- Summary of key concepts and takeaways from both days
- Discussion of practical applications and steps for implementation
- Q&A session
- Participant feedback and evaluation

# PROGRESS LINK

## REGISTRATION FORM

### FAILURE MODE AND EFFECT ANALYSIS (FMEA)

6th & 7th May 2026 (WED & THU)

The Manager  
PROGRESS LINK TRAINING & CONSULTANCY SDN BHD  
C-3-1, Vantage Desiran Tanjung, Tanjung Tokong, 10470 Tanjung Tokong, Penang, Malaysia.  
Tel: 04-297 6881; Fax: 04-297 6882  
Email: sales@progresslink.com.my

Dear Sir/Madam,

Please register the following participant(s) for this program as follows:-

Course Title: FAILURE MODE AND EFFECT ANALYSIS (FMEA)

Venue: JAZZ HOTEL, PENANG

Date: 6th & 7th MAY 2026

**Registration (Please tick (✓) accordingly)**

Single registration (1 x participant) = RM1,480.00     2 x participants = RM2,960.00     3 x participants = RM4440.00

Group registration discount (Minimum 4 participants or more from the same organisation)

No. of participants \_\_\_\_\_ x RM 1,110.00 per pax = Total RM \_\_\_\_\_

**Payment Method (Please tick (✓) accordingly)**

Claim under HRD Corp Claimable Courses scheme (Program ID: 10001340007 - Public)

Enclosed cheque nos. \_\_\_\_\_ being payment made in favour of "PROGRESS LINK TRAINING & CONSULTANCY SDN BHD"

Online transfer / Direct bank-in to PUBLIC BANK BERHAD account number 3194 100 708 (please email us the bank-in slip)

Requested by:

Name: \_\_\_\_\_

Designation: \_\_\_\_\_

Email: \_\_\_\_\_

Company name: \_\_\_\_\_

Address: \_\_\_\_\_

Tel No.: \_\_\_\_\_ Mobile No.: \_\_\_\_\_ Fax No.: \_\_\_\_\_

Signature: \_\_\_\_\_

Date: \_\_\_\_\_

Company Stamp

**Terms & Conditions:-**

Kindly forward the payment to us at least one week before the commencement of the program. A completed registration form submitted by fax, mailed, or e-mailed to Progress Link & Consultancy Sdn Bhd would be confirmed. All cancellations must be made in writing. There will be no charge for cancellations received 14 or more working days before the start of the program. Cancellation received between 7 - 13 working days before the start of the program is subject to a cancellation fee of 50% of the course fees. Cancellation received 6 working days and below before the start of the program is subject to a full 100% cancellation fee of the course fees. If the full course fees are payable if the participant fails to attend the program. However, a replacement may be accepted at no additional cost, subject to approval. Progress Link Training & Consultancy Sdn Bhd reserves the right to change the facilitator, reschedule or cancel the program and all efforts will be taken to inform participants of the changes. Should the program be cancelled or postponed, Progress Link Training & Consultancy Sdn Bhd is not responsible for covering airfare, hotel, other travel costs, or any additional costs incurred by the participants.

1. Participant Name :

IC or Passport No :

Designation :

Mobile No:

Email address :

2. Participant Name :

IC or Passport No :

Designation :

Mobile No:

Email address :

3. Participant Name :

IC or Passport No :

Designation :

Mobile No:

Email address :

4. Participant Name :

IC or Passport No :

Designation :

Mobile No:

Email address :

5. Participant Name :

IC or Passport No :

Designation :

Mobile No:

Email address :

*(If there are more participants, please attach a separate list)*